

# BG UL SYSTEM

## Topping Slab Underlayment Waterproofing



### Overview

BG2000 UL is a premium, seamless waterproofing membrane specifically engineered for plywood and OSB balconies and decks, commonly used in multi-family construction under lightweight concrete. This single-component, fluid-applied elastomeric membrane is designed for plywood and OSB balcony or deck structures that will be topped with lightweight concrete. Its high-performance formulation ensures exceptional durability, flexibility, and long-term protection against water intrusion. BG2000 UL bonds securely to a wide range of building materials, including — but not limited to — plywood, OSB, concrete, ICF, and primed metal. The result is a reliable, high-quality waterproofing solution that meets the demanding needs of multi-family projects.

### Surface Preparation

Substrate must be structurally sound and free from grease, oil, dirt, dust, sealers<sup>®</sup>, water repellents and other foreign materials which may interfere with proper bonding.

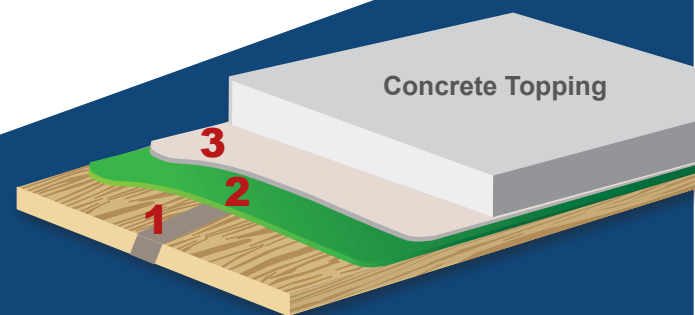
**Wood:** Multicoat BG 2000 UL System for above grade Topping Slab Underlayment Waterproofing applications will work with Plywood or OSB. Caulk all joint in the Wood or OSB with Flex- C ( or equivalent ) Polyurethane Caulk. Caulk all joints in flashings with the same. (see detailed drawings for further specific instructions)

### Application

**Step 1: FLEX-C:** Clean all working surfaces of dirt, oil, loose paint, and contamination, then maintain Flex-C at room temperature before application to ensure easy gunning and tooling. Gun the sealant with a smooth, continuous bead and tool within fifteen minutes of application if needed.

**Step 2: BG-2000:** Prepare the surface by ensuring it is clean and free of contaminants before applying the material. When spraying you can spray on thick coat at 60 mils or spray 2 coats at 30 mils allow the first coat to cure before spraying the second coat at 30 mils. Apply at 60 mil wet thickness to achieve proper coverage and performance. Allow the membrane to dry for 24 hours before proceeding with any additional work or traffic.

**Step 3: RicRoll 350:** apply Ric Roll over BG once cured to serve as a protection course and as a drainage fabric to help move the water off the deck.



STEP	MATERIAL	PURPOSE	COVERAGE
1	FLEX-C™	Crack Filler	1/4" - 42 Linear Feet
2	BG2000™	Waterproofing	35-45 sq ft. gallon.
3	RicRoll™ 350	Reinforcement	800 sq ft.

# FLEX-C

## I MC07-FC I Adhesive Sealant Caulking



### Overview

Multicoat's FLEX-C STICKY SEAL is a high performance joint sealant for a wide range of construction applications. FLEX-C delivers tough, elastic sealing performance, for joints requiring compression and extension greater than 35%.

### Common Applications

- Roofing
- Parapets
- Window and door frames
- Block and Masonry
- Expansion Joints
- Siding
- Weather Sealing
- Cove Joints.

### Features & Benefits

- Solvent and isocyanate free, 100% solids
- Non-silicone
- Non-flammable
- Fast-curing
- Primerless bonding to most surfaces
- Paint compatible
- Low odor
- Extremely low shrinkage
- Non-staining
- Mildew resistant

### Standards & Compliance

- May contribute to LEED V4 EQ Material Resource Credit 4.1 - Adhesives and Sealants
- ASTM C920, Type S, Grade NS, Class 35 Uses NT, T, G, A & O
- Federal Specification TT-S-00230-C Type II Class B
- Corps of Engineers CRD-C-541, Type II, Class B
- Conforms to OTC Rule for Sealants and Caulks
- Meets requirements of California Regs: CARB, BAAQMD and SCAQMD
- Conforms to USDA Requirements for Non-food Contact

### Packaging

- |                                |               |                   |
|--------------------------------|---------------|-------------------|
| • 10.1 oz. (300 ml) cartridges | 24 tubes/case | 45 cases/pallet   |
| • 20 oz. (600 ml) sausages     | 12 tubes/case | 60 cases/pallet   |
| • 5 gallon (18.93l) buckets    | N/A           | 36 buckets/pallet |

### Colors



Limestone

### Testing

Please contact your Multicoat Sales Representative before writing specifications around this product. Product properties are as follows:

Property	Value	Units	Test Method
VOC'S	34.5	g/L	EPA Test Method 24
Skinover Time @ 50% R.H. 70°F	30	Min.	ASTM C679
Density	12.7	#/Gal	-
Hardness	50	Shore A	-
Shear Strength	187.7	PSI	ASTM D1002
Peel Strength			
ABS	12.7		
Plastic	25.1		
Aluminum	25.7		
Mortar	26.7	lbf/in	ASTM D903
Glass	24.0		
Pine	25.8		
PVC	23.9		
Cold Rolled Steel			
Tensile	268	PSI	ASTM D412
Elongation Break	259	%	ASTM D412
Chemistry	Hybrid Polymer	-	-
Movement	+/- 35%	-	ASTM C920
Shrinkage	0%	-	-
Service Temperature	-40° F - 200° F	-	-
Viscosity	2,730,000 1,555,000 460,000	cps - 1 rpm cps - 2 rpm cps - 10 rpm	ASTM D2196-10

# FLEX-C

## ADHESIVE SEALANT CAULKING

### High Performance Durability

- FLEX-C can be installed on damp surfaces which is defined as when no moisture is transferred to the skin when the substrate is touched
- The cured bead exhibits excellent long-term adhesion to the porous surfaces
- Does not dry or become brittle
- Low odor, ideal for indoor and outdoor use

FLEX-C typical values represent data from multiple batches. Values will be refreshed, as necessary, upon data collection from additional campaigns and long-term variability discernment.

### Application

Remove all dirt, oil, loose paint, frost and other contamination from all working surfaces. Maintain FLEX-C at room temperature before applying to ensure easy gunning and tooling. Test and evaluate to ensure adequate adhesion. Carefully gun the sealant with a smooth, continuous bead. If tooling is needed, do so within fifteen minutes of application.

#### Concrete

Prior to application remove any residual contamination by mechanical abrasion, sand blasting or power washing. On green concrete, remove all release agents and loose concrete. Dry all visible and/or standing water. Install an appropriate backer rod to avoid three-point bonding.

#### Metal

Prepare all metal to ensure maximum adhesion. Remove all rust, scale and residue using a wire brush. Remove films, loose or inappropriate coatings and oils with an appropriate solvent such as alcohol.

\*Multicoat recommends that coated substrates be tested for proper adhesion prior to starting a project to determine suitability for use.

#### Wood

Wood should be clean, sound and dry prior to sealant application. Allow treated wood to weather for six months prior to application. Remove all coatings and paint to ensure proper adhesion. FLEX-C is not recommended for use on fire retardant lumber.

#### Priming

In most applications FLEX-C will not require a primer. However, certain substrates may require a primer to ensure a long lasting bond and weatherproof seal. It is the applicator's responsibility to determine whether or not a primer is needed in their specific application

### Material Handling

#### Clean Up

Clean tools and any uncured adhesive with mild solvent such as mineral spirits.

#### Material Storage/Disposal

Store securely between 60° F - 80° F in unopened container. Recommended shelf life is 12 months from date of manufacture on bottom of tube. Keep tube tightly sealed. Dispose of contents/container in accordance with Local/Regional/ National/International Regulations. Refer to Safety Data Sheet (SDS) for further information.

#### Shelf Life and Storage

The shelf life is 12 months for an unopened container from the date of manufacture. Reference the date of manufacture. YYMMDD ex. 190522 is May 22, 2019.

### Limitations

FLEX-C should not be used in applications in which it will be permanently exposed to liquid water.

#### Precautionary Statements

Do not use until all instructions and safety precautions have been read and understood. Wear protective gloves, protective clothing and eye protection. Wash contaminated clothing before reuse. Contaminated work clothing should not be allowed out of the workplace. IF ON SKIN: Wash exposed body areas with soap and water.

IF IN EYES: Rinse with water, remove contact lenses and continue rinsing. If exposed or concerned get medical advice/attention. Refer to Safety Data Sheet (SDS) for further information.

### Damage Limitation

Seller shall not be liable for any damages, injury, loss, direct or consequential, resulting from its products. The parties intend that the limitation of damages, including consequential damages, applies even if the exclusive remedy provided for herein fails of its essential purpose.

### Exclusive Remedy

Seller's sole obligation, and buyer's exclusive remedy shall be to replace material if found to be defective.

### Warranty Disclaimer

There are no warranties which extend beyond the description of the fact hereof. Seller expressly disclaims all other warranties regarding the use of its products, whether expressed or implied, including the implied warranties of merchantability and for fitness of a particular purpose. Since use of the product is beyond the Seller's control, the Buyer assumes all risk of use.

### Warranty

Materials are guaranteed with respect to uniformity and quality within manufacturer's specifications.



WEST COAST (949) 888-7100

EAST COAST (304) 937-2101

INFO@MULTICOAT.COM | MULTICOAT CORPORATION 2021 | WWW.MULTICOAT.COM



# BG 2000

## Topping Slab Underlayment Waterproofing

### Product Description

BG2000 is an high solid content, VOC compliant, elastomeric waterproofing membrane used for waterproofing Ideally for below grade, backfilled walls, underlayment waterproofing, planters, and split concrete slab construction. BG2000 is supplied as a ready-to-use single component material right out of the bucket. BG2000 is a single component self cure fluid applied membrane. BG2000 forms a seamless, flexible waterproofing membrane that can be applied to almost any type of substrate.

#### Suitable Substrates:

- Concrete
- Masonry
- ICF
- CMU
- Cement Mortar Beds
- Poured Gypsum underlayment
- Gypsum wallboard
- Plywood
- OSB
- Cement Backer board

#### Uses:

- Below grade
- Retaining Walls
- Underlayment
- Split Slab
- Planter boxes
- Elevator Pits
- Precast boxes
- ICF



### Coverage

35-45 sq. ft. per gallon, one coat. (Coverage may vary due to application method and/or substrate condition.)

### Limitations

**DO NOT** apply if substrate temperature is below 40°F and falling, above 100°F and rising, or if precipitation is expected within a twenty four (24) hour period after each coat.

### Packaging And Storage

- Furnished in:  
5 gallon pails | 55 gallon drums | 275 gallon totes.
- Store at 40-90°F.
- Shelf life is approximately 18 months in unopened containers.



## Laboratory Test Data

### TEST DATA - BG 2000 (UNDERLAYMENT WATERPROOFING)

TEST	METHOD	BG 2000 RESULTS
Perm	ASTM E96	.03
Tensile Bond Adhesion	ASTM C-297	335 psi (coh/adh)
Tensile Strength	ASTM D-412	399 psi
Elongation	ASTM D-412	319.3%
Hydrostatic Head Effect	12" Water/Film @ 40mil	Pass 96 Hrs/no
Hydro. Pressure	ASTM C-1306	Pass >45 psi <sup>1</sup>

<sup>1</sup> The test procedure only calls for taking the pressure to 45 psi but after passing so easily, test was taken up to 80 psi for 3 hours and surface still did not leak

WEST COAST (949) 888-7100

EAST COAST (304) 937-2101

INFO@MULTICOAT.COM | MULTICOAT CORPORATION 2021 | WWW.MULTICOAT.COM





# BG 2000

## Topping Slab Underlayment Waterproofing

### Product Advantages:

- Advantages:
- Perm Rate .03
- Green Concrete
- UV Stable
- ICF friendly
- Roll or spray on out of the same bucket
- Changes color as it cures - light green to dark green
- Fast curing
- Install brick, stone, tile directly over the membrane
- You can paint directly over the membrane \*
- Seamless
- Low VOC
- Non hazmat disposal

**Always read and Understand SDS before Use**

### Surface Preparation

Substrate must be structurally sound and free from grease, oil, dirt, dust, sealers, water repellents and other foreign materials which may interfere with proper bonding. Cracks must be repaired and all potmarks or honeycombs, etc. must be filled with Multicoat's scratch kote 2000, Multicoat's speed mix, or a suitable mortar.

Surface should be dry to touch prior to applying BG2000. For poured in place walls, a waterbase form release should be used. If an oil base release is used, use trisodium phosphate (TSP), power to wash the surface. Once washed thoroughly rinse the surface and let dry before applying BG 2000.

### Application

Suitable substrate:

Concrete

ICF

Plywood (exterior)

Masonry

CMU

Cement Mortar Beds

Apply with ¾ inch non-shed nap roller, or an air less sprayer. If using a roller its a 2 coat application one coat at 30 mils let cure then apply a second coat at 30 mils. For a total of 60 mils wet.

When spraying you can spray one thick coat at 60 mils or spray two coats 30 mils let cure then a second coat at 30 mils

Can be applied with a airless sprayer with a 519 tip for best results.

### Clean Up

Clean tools soap and water

### Material Handling

#### Material Storage/Disposal

Store securely between 40° F - 90° F in unopened container. Keep tube tightly sealed. Dispose of contents/container in accordance with Local/Regional/ National/ International Regulations. Refer to Safety Data Sheet (SDS) for further information.

#### Shelf Life and Storage

The shelf life is 12 months for an unopened container from the date of manufacture. Reference the date of manufacture. YYMMDD ex. 190522 is May 22, 2019.

### Exclusive Remedy

Seller's sole obligation, and buyer's exclusive remedy shall be to replace material if found to be defective.

### Warranty Disclaimer

There are no warranties which extend beyond the description of the fact hereof. Seller expressly disclaims all other warranties regarding the use of its products, whether expressed or implied, including the implied warranties of merchantability and for fitness of a particular purpose. Since use of the product is beyond the Seller's control, the Buyer assumes all risk of use.

### WARRANTY

Materials are guaranteed with respect to uniformity and quality within manufacturer's specifications.



WEST COAST (949) 888-7100

EAST COAST (304) 937-2101

INFO@MULTICOAT.COM | MULTICOAT CORPORATION 2021 | WWW.MULTICOAT.COM



# BG2000 TOPPING SLAB UNDERLAYMENT OVERVIEW

## DETAILED DRAWING 2025

**DETAIL WORK:**  
24 HOUR CURE

**1ST COAT:**  
2-4 HOUR CURE

**2ND COAT:**  
24 HOUR CURE

BG2000 should achieve  
60 mil total thickness

BG2000 (2nd coat)

BG2000 (1st coat)

Pre-sloped plywood or OSB  
Substrate 2% maximum

CAULKING AT JOINTS, PLANE  
CHANGES, FLASHING OVERLAP, & DRAINS<sup>1</sup>  
(USE POLYURETHANE FLEX C CAULK)

( 1 - MULTICOAT RECOMMENDS THE USE OF FLEX-C OR EQUIVALENT ON ALL JOINTS AND PLANE CHANGES )

WEST COAST (949) 888-7100

EAST COAST (304) 937-2101

INFO@MULTICOAT.COM | MULTICOAT CORPORATION 2021 | WWW.MULTICOAT.COM



# RicRoll 350

## PROTECTION & DRAINAGE FABRIC COMPOSITE



### Description

RicRoll 350, commonly referred to as “ThicRic,” is a high-strength, multi-layer fabric composite supplied in rolls measuring 4 feet in width and 200 feet in length. This product is specifically engineered to fulfill two primary functions: protecting underlying waterproofing membranes and serving as a cost-effective drainage mat suitable for various clay soil conditions.

### Highlights

Waterproofing Membrane Protection | High Puncture Resistance | Flexible | High Absorbancy | Tear Resistant

### Application

RicRoll 350 (“ThicRic”) is recommended for use in various construction and landscaping applications where robust waterproofing membrane protection and efficient drainage are essential.

#### Properties (Typical)

#### US Units

#### Metric Units

Basic Weight	10.38 oz/yd <sup>2</sup>	352 gsm
Thickness	88.6 mils	2.25 mm
Tensile MD	809.3 lbf	360 daN
Tensile CMD	685.6 lbf	305 daN
Tear MD	454.1 lbf	202 daN
Tear CMD	377.6 lbf	168 daN
Elongation % MD	33 %	82 %
Elongation % CMD	36 %	51 %
Puncture Resistance D 4833	1.10 %	1.10 %

#### Packaging

Mat Length	200 ft	60.96 m
Mat Width	48 in	1219.2 mm

*Note: Contact Multicoat for custom width and length sizes. Actual length determined by specified roll diameter*

*The physical and chemical properties of Multicoat products represent typical average values obtained in accordance with accepted test methods at the time of manufacture and are subject to normal manufacturing variations. The information regarding properties set forth in this data sheet is provided as a technical service and is subject to change without notice. For additional product and warranty information, contact your local Sales Representative.*

WEST COAST (949) 888-7100

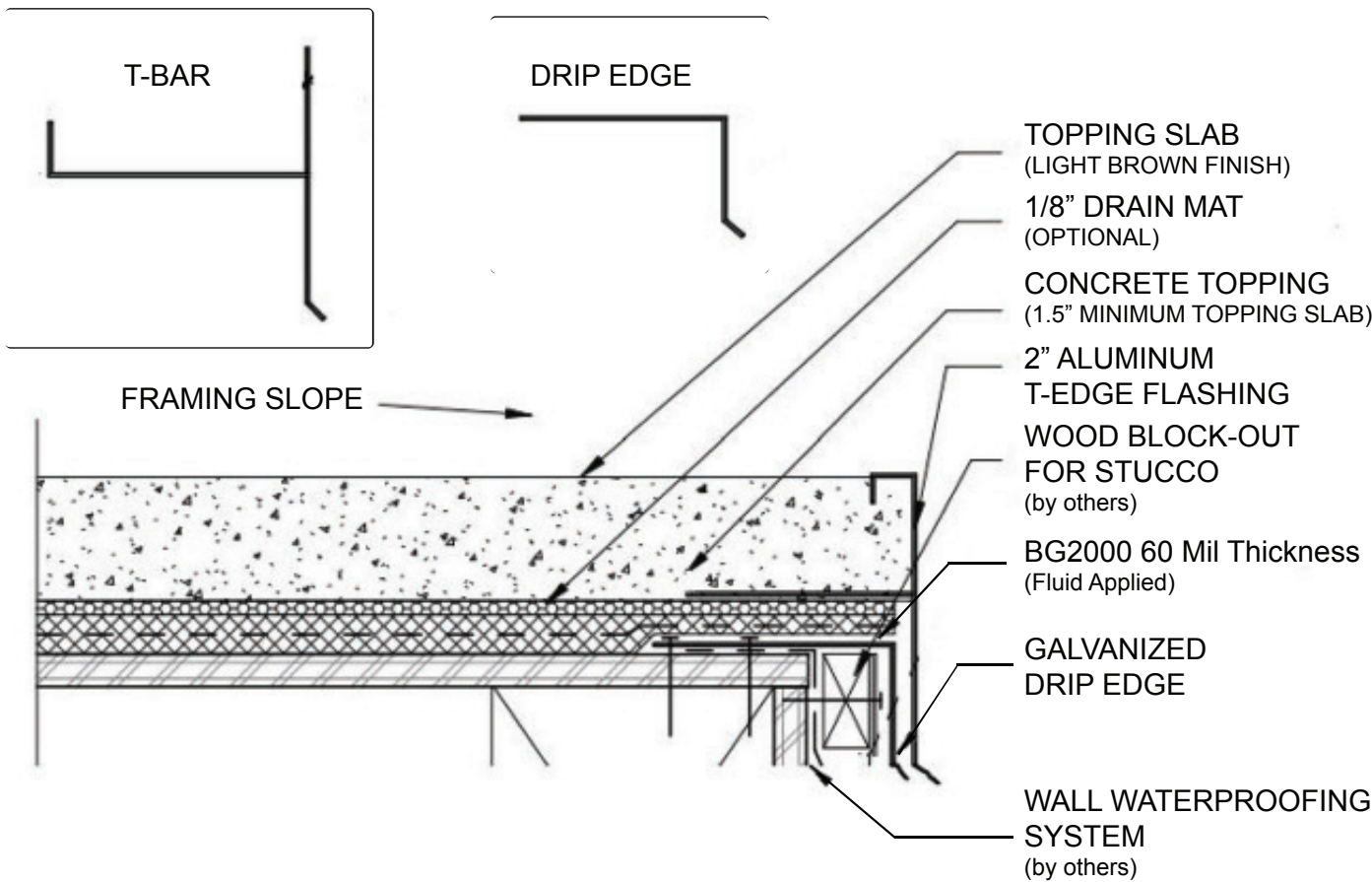
EAST COAST (304) 937-2101

INFO@MULTICOAT.COM | MULTICOAT CORPORATION 2021 | WWW.MULTICOAT.COM



# TOPPING SLAB UNDERLAYMENT - DRIP EDGE

DETAILED DRAWING 2025



*Pre-sloped plywood or OSB Substrate 2% maximum*

WEST COAST (949) 888-7100

EAST COAST (304) 937-2101

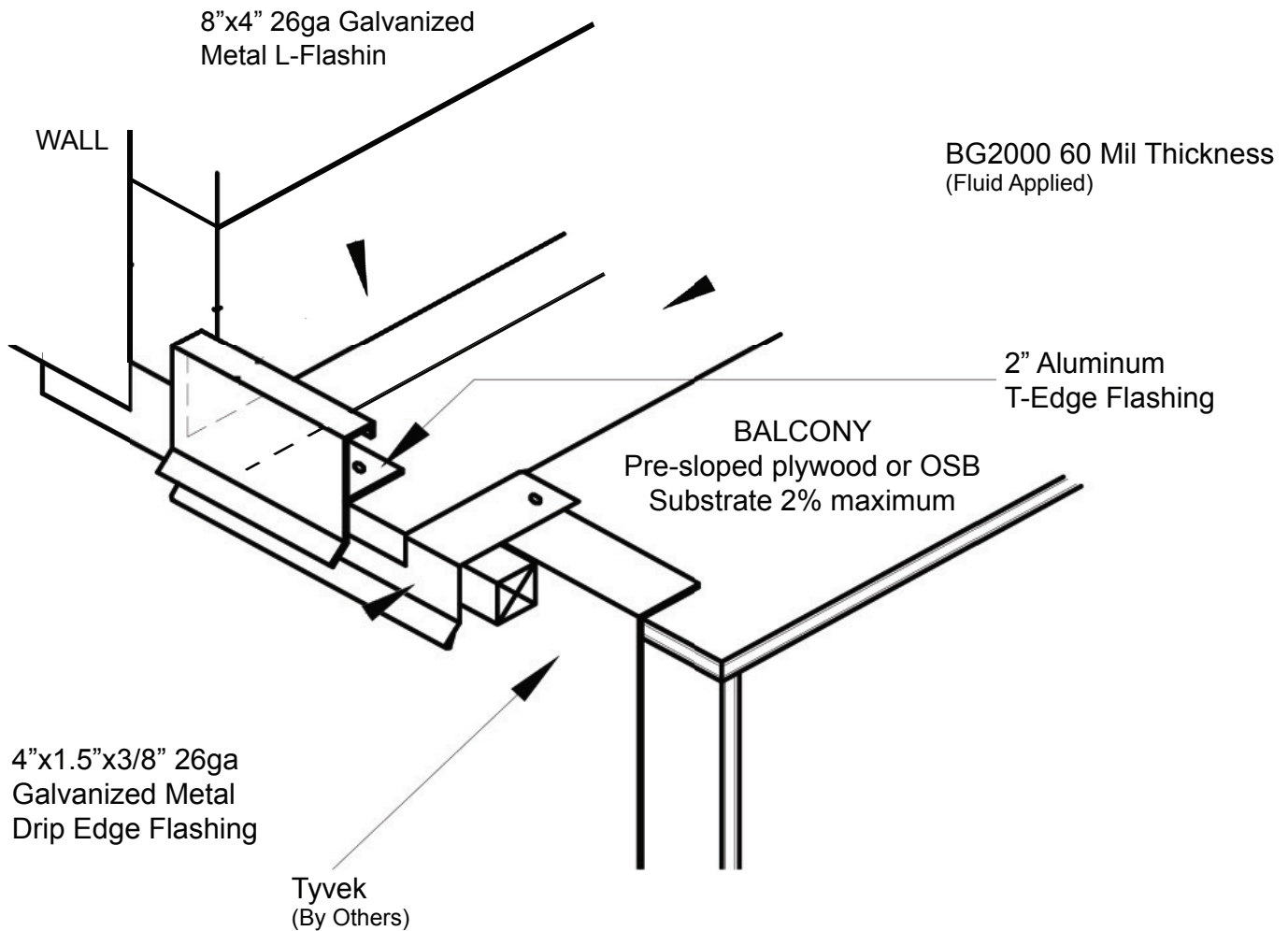
INFO@MULTICOAT.COM | MULTICOAT CORPORATION 2021 | WWW.MULTICOAT.COM





# TOPPING SLAB UNDERLAYMENT - EDGE FLASHING

## DETAILED DRAWING 2025



WEST COAST (949) 888-7100

EAST COAST (304) 937-2101

INFO@MULTICOAT.COM | MULTICOAT CORPORATION 2021 | WWW.MULTICOAT.COM

